



Discover a clearer
picture of your health

Full Body MRI



Invest in your most valuable asset—your health

Most people don't think about their health until something feels wrong—but in many cases, by the time symptoms appear, it's too late.

Luckily, there's a better way. A full body MRI is a comprehensive head-to-thighs imaging test designed to catch potential cancers, vascular conditions and other diseases at an early stage, before symptoms appear, and when treatment is most effective.

At Clarity Care, we combine state-of-the-art imaging technology, expert doctors and the personalized consultations that will provide the insight needed to detect—or rule out—life threatening disease.

What's missing from your annual physical?

For starters, visual evidence of your good health. Silent conditions like early-stage cancers of the lungs, pancreas, and colon, aneurysms, hidden visceral fat and other chronic conditions will likely not be revealed with standard blood tests or by a physical examination.

Your full body MRI clarifies your health, so you can work with your doctor to develop your optimal plan, either to treat early-stage disease, or to be proactive in ongoing health maintenance.

Your Consultation

During your initial consultation with one of our doctors, you will have the chance to discuss any areas of concern to help us personalize your scan to meet your needs. After your MRI results are evaluated, our doctor will consult with you again—either in person or by video—to review your test results, answer any questions, and provide actionable insight to help you take control of your health.

Pricing

We offer two packages to fit your needs:

- **Full Body MRI Scan: \$1,900**

Includes a head-to-thighs MRI scan, follow-up consultation with a subspecialized radiologist (in-person or video), and a comprehensive report for you and your doctor(s).

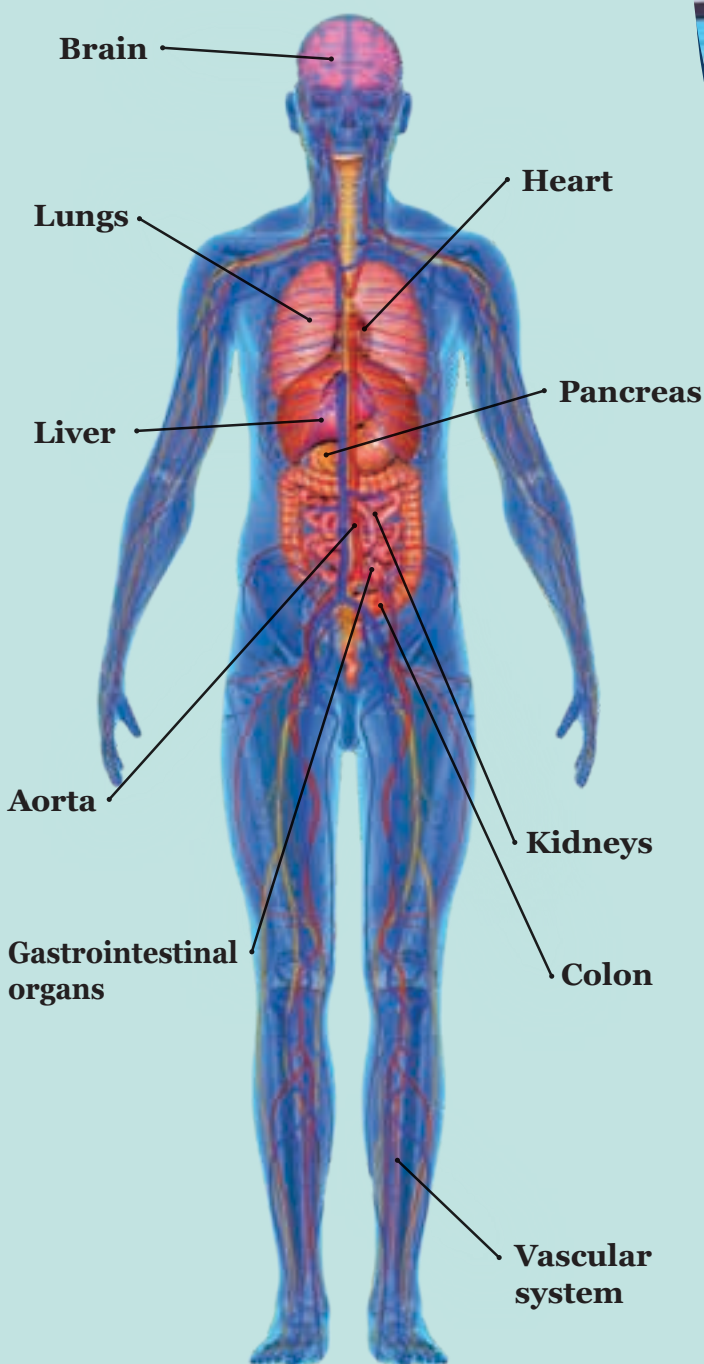
- **Comprehensive Package: \$2,250**

Includes everything in the Full Body MRI Scan, plus a body composition scan, low-dose CT lung cancer screening, and a calcium scoring test.

HSA and FSA are accepted. This is not covered by insurance.



What does the full body MRI cover?





What can the full body MRI detect?



Cancer: Early detection increases the 5-year survival rate to nearly 90%



Heart Disease: Early detection reduces heart disease mortality risk by over 50%



Brain Abnormalities: Detect neurological problems 2-3 years before symptoms appear



Aneurysms: Often treatable if detected before they rupture

About Clarity Care

Clarity Care is a physician-owned imaging center offering fast, high-quality diagnostic and preventive scans in a comfortable, outpatient setting. Patients and providers trust Clarity Care for our expertise, prompt scheduling, and detailed results—delivered by subspecialty-trained radiologists.

From MRI, CT, mammograms, and ultrasound to preventive full-body scans, Clarity Care provides the answers and compassionate service you deserve—without hospital hassle or cost.

**To learn more, visit
ClarityCareKC.com.**



**9040 Quivira Road
Lenexa, Kansas, 66215**

913.944.4900

